



# TRANS- SPEED BSGA

THE HIGH SPEED DOOR WITH  
CURTAIN TENSIONING AND  
WEIGHT COMPENSATION

**ITW**  
INDUSTRIETORE

**TORMAFA**  
Maschinenschutz- und Industrietore



## ADVANTAGES AT A GLANCE



Opening speed up to 2.0 m/s



Door size up to 6.0 m x 6.0 m



Resistance to wind load up to class 3



Low lintel requirement



Permanent curtain tension



Weight compensation



Wide range of colors



Atex

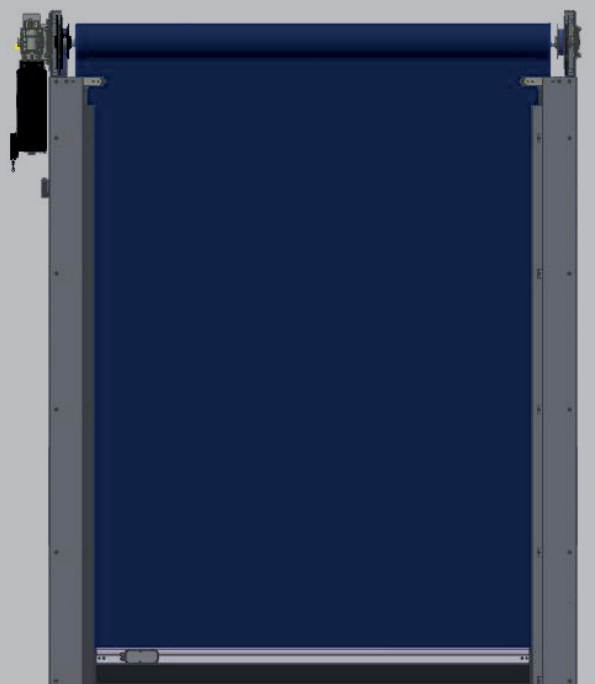


V2A



Deep-freeze

## SPECIAL FEATURES





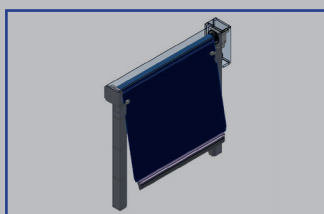
# CURTAIN TENSION AND WEIGHT COMPENSATION

The Transspeed can be used for additional hall closure or as an interior door. The Transspeed is a high-quality solution for any building opening that is passed through very frequently by forklifts or floor vehicles.

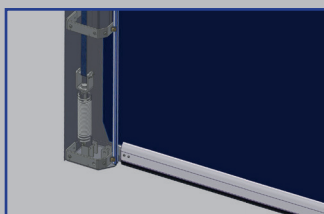
Different curtain designs can be used to meet a wide range of requirements.

The permanent curtain tensioning system keeps the door leaf under tension at all times during opening and closing.

The tension spring system for weight compensation rounds off the system and offers fast emergency opening.



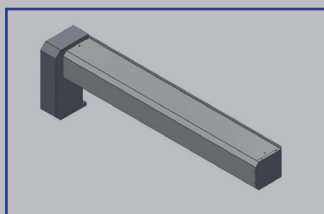
Anti-Crash-System



Counterbalance and  
Curtain tension



Light grid



Bale and  
drive cover

## TECHNICAL DATA

- Opening speed up to 2.0 m/s
- Closing speed up to 0.8 m/s
- Door sizes up to 6.0 m height and 6.0 m width
- DR2100 microprocessor control system with main switch and integrated frequency converter
- 230 V/50Hz, IP54 Operator
- Required lintel height min. 447 mm
- Curtain available in various colors or fully printed with a motif of your choice

## SAFETY

- Access protection by means of all-round cladding
- Passage monitoring by means of contactless light grid
- Anti-crash function - automatic reset (optional)
- Emergency opening by pull rope, automatic opening in case of power failure (optional)
- Signal lights and traffic light control (optional)

# OUR FURTHER PRODUCT RANGE

TRANSSPEED BSGA (EN) | 31.01.2023 | TECHNICAL CHANGES RESERVED



**SPIRAL DOORS**



**FOLDING DOORS**



**HORIZONTAL HIGH-SPEED DOORS**



**VERTIKAL HIGH-SPEED DOORS**



**SWING DOORS**



**STRIP CURTAINS**



**MACHINE PROTECTION DOORS**



**SECTIONAL DOORS**



**STEEL / ALUMINUM ROLLER DOORS**

## SCOPE OF APPLICATION



INDUSTRY



TRANSPORT



LOGISTICS



AUTOMOTIVE



M. PROTECTIONS



CLEAN ROOM



SUPERMARKET



FOOD



COOLING AREA



ATEX

**ITW Industrietore GmbH**  
Adolf-Kolping-Straße 14  
73072 Donzdorf  
Germany

Tel. +49 7162 9129-60  
Fax +49 7162 9129-64  
info@itw-torsysteme.de  
www.itw-torsysteme.de

**ITW**  
INDUSTRIETORE