

HIGH-SPEED-DOORS







ATEX

DOORS FOR THE EXPLOSION-PROTECTED
AREA FOR ROOMS WITH OVER- AND
UNDERPRESSURE

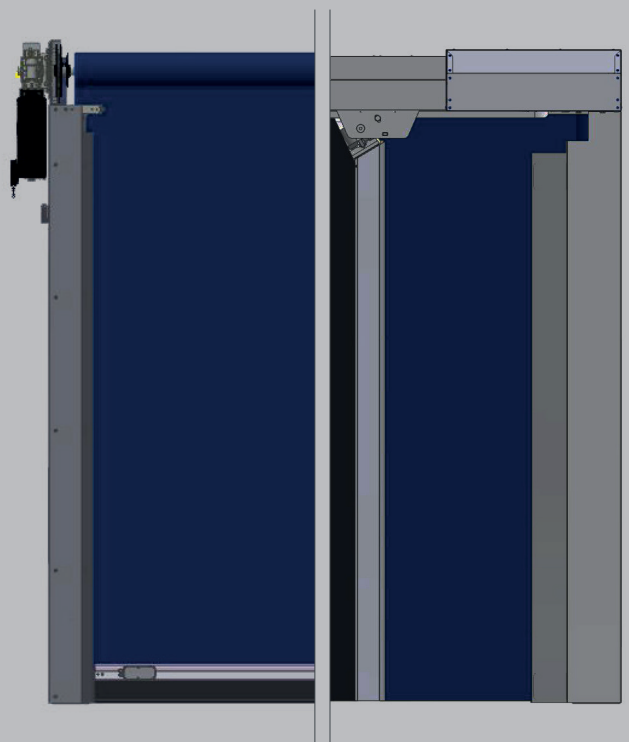




THE ADVANTAGES AT A GLANCE

-  Opening speed up to 2.0 m/s
-  Door size up to 4.0 m x 4.0 m
-  Resistance to wind load up to class 3
-  Vertical or horizontal opening
-  Low lintel requirement
-  Permanent curtain tension
-  Can be used in explosion protection zones 1, 2, 21 and 22
-  ATEX-tested components (except control cabinet) Certificates are supplied

THE SPECIAL FEATURES

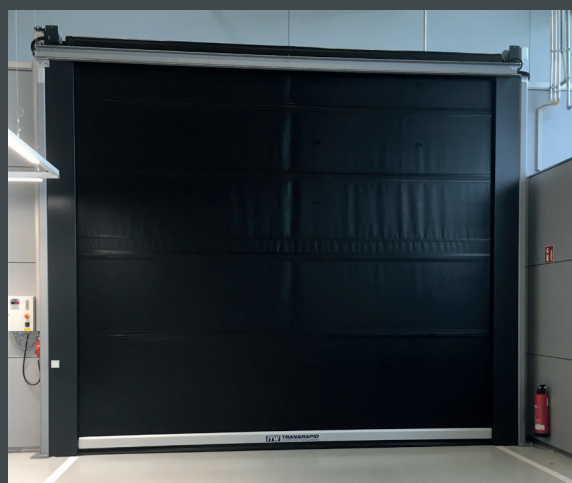


DOORS FOR EXPLOSION PROTECTION

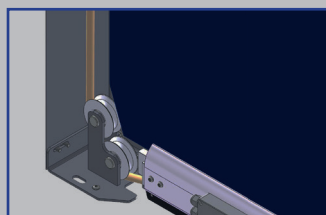
Our high-speed roller shutters from ITW fulfil the strict requirements of the ATEX product directives 94/9/EC and DIN 13453-1. The special encapsulation of the drives reliably prevents the formation of sparks. To ensure maximum safety, the control unit must be installed outside the zone.

The antistatic PVC hangings are available in various designs. The antistatic PVC curtains are available in various designs so that you can choose the optimum solution for your specific requirements.

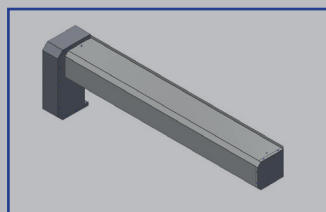
With our high-speed doors, you achieve maximum safety for use in explosion-protected areas. Our doors offer you the option of selecting the right door type and the desired curtain to suit your individual requirements.



Light grid



Curtain tension



Bale and drive cover

TECHNICAL DATA

- Door sizes up to 4.0 m high and 4.0 m wide
- DR2100 microprocessor control unit with main switch and integrated frequency inverter
- 230 V/50Hz, IP54 operator

Horizontal high-speed door

- Required lintel height min. 250 mm
- Opening speed up to 3.0 m/s

Vertical high-speed door

- Required lintel height min. 447 mm
- Opening speed up to 2.0 m/s

SAFETY

- Protection against intrusion due to all-round panelling
- Access monitoring by means of light barrier
- Self-monitoring shooting edge

OUR FURTHER PRODUCT RANGE



SPIRAL DOOR



FOLDING DOOR



HORIZONTAL HIGH-SPEED DOOR



VERTIKAL HIGH-SPEED DOOR



SWING DOORS



STRIP CURTAINS



MACHINE PROTECTION DOOR



SECTIONAL DOORS



STEEL / ALUMINUM ROLLER DOORS

SCOPE OF APPLICATION



INDUSTRY



TRANSPORT



LOGISTICS



AUTOMOTIVE



M. PROTECTIONS



CLEAN ROOM



SUPERMARKET



FOOD



COOLING AREA



ATEX

ITW Industrietore GmbH
Adolf-Kolping-Straße 14
73072 Donzdorf
Germany

Tel. +49 7162 9129-60
Fax +49 7162 9129-64
info@itw-torsysteme.de
www.itw-industrietore.de

**ITW**
INDUSTRIETORE