



# MINIRAPID SM

THE FAST LOADING GATE  
FOR THE RETAIL TRADE

**ITW**  
INDUSTRIETORE

**TORMAFA**  
Maschinenschutz- und Industrietore





## THE ADVANTAGES AT A GLANCE



Opening speed up to 2.0 m/s



Door size up to 5.0 m x 5.0 m



Low lintel requirement



Crash protection



Smooth running



Large selection of colours and design options

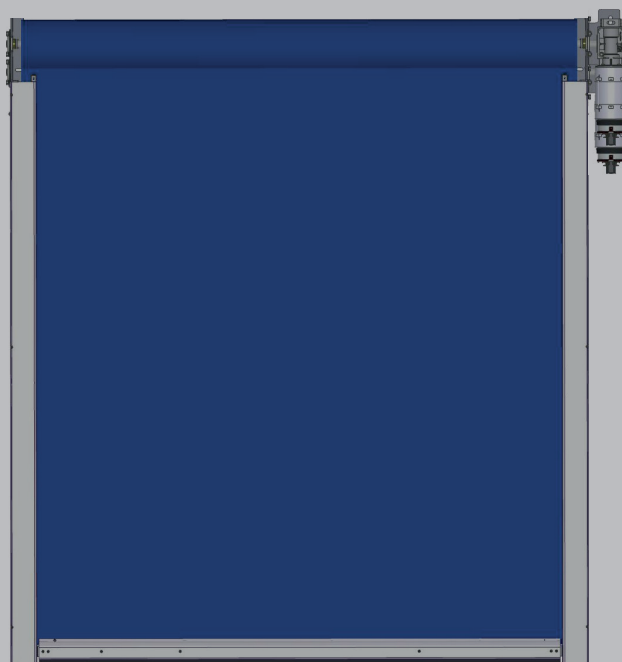


1-person assembly due to the low weight of the winding shaft



Winding shaft and curtain can be individually shortened for easy installation

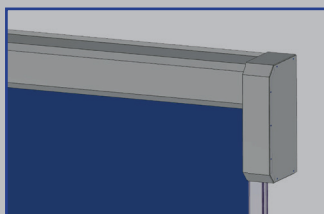
## THE SPECIAL FEATURES



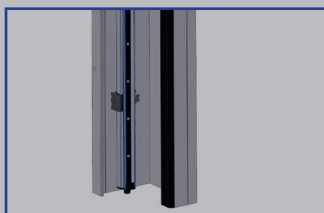
# THE GATEWAY TO MODERN RETAIL

Our Minirapid SM door is the ideal solution for modern retail. With an impressive opening speed of up to 2.0 m/s and a maximum door size of 5.0 m x 5.0 m, it offers the perfect balance between efficiency and safety. Thanks to its low drop requirement and crash protection, it is not only safe but also extremely robust. The smooth running and wide range of colours allow it to integrate seamlessly into any environment. The one-man assembly and the individually shortenable winding shaft make installation simple and uncomplicated.

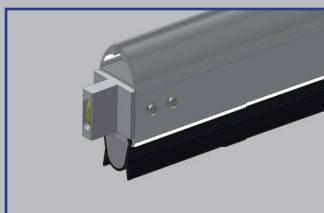
Design your door according to your wishes and strengthen your brand identity with customised logos and designs. Efficiency, hygiene, energy savings and safety - the Minirapid SM door offers you all of this.



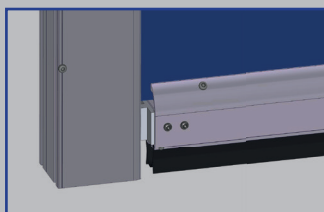
Drive and bale cover



Light grid



Anti-crash function



Crash in the side guides

## TECHNICAL DATA

- Opening speed up to 2.0 m/s
- Closing speed up to 0.8 m/s
- Resistance to wind load up to class 1
- Door sizes up to 5.0 m high and 5.0 m wide
- DR2100 microprocessor control unit with main switch and integrated frequency inverter
- 230 V/50Hz, IP54 operator
- Required lintel height min. 345 mm
- Curtain available in various colours or fully printed with motifs available
- Plastic winding shaft can be individually shortened, low weight, easy to install

## SAFETY

- Passage monitoring by means of contactless light grid
- Anti-crash function (optional)
- Emergency opening by hand crank or reel chain
- Signal lights and traffic light control (optional)



# OUR FURTHER PRODUCT RANGE



**SPIRAL DOOR**



**FOLDING DOOR**



**HORIZONTAL HIGH-SPEED DOOR**



**VERTIKAL HIGH-SPEED DOOR**



**SWING DOORS**



**STRIP CURTAINS**



**MACHINE PROTECTION DOOR**



**SECTIONAL DOORS**



**STEEL / ALUMINUM ROLLER DOORS**

## SCOPE OF APPLICATION



INDUSTRY



TRANSPORT



LOGISTICS



AUTOMOTIVE



M. PROTECTIONS



CLEAN ROOM



SUPERMARKET



FOOD



COOLING AREA



ATEX

**ITW Industrietore GmbH**  
Adolf-Kolping-Straße 14  
73072 Donzdorf  
Germany

Tel. +49 7162 9129-60  
Fax +49 7162 9129-64  
info@itw-torsysteme.de  
www.itw-torsysteme.de

