



# MINIRAPID FOOD

THE HIGH-SPEED DOOR WITH  
CERTIFICATE FOR THE HYGIENE AREA

**ITW**  
INDUSTRIETORE

**TORMAFA**  
Maschinenschutz- und Industrietore



## HYGIENE IN THE FOCUS

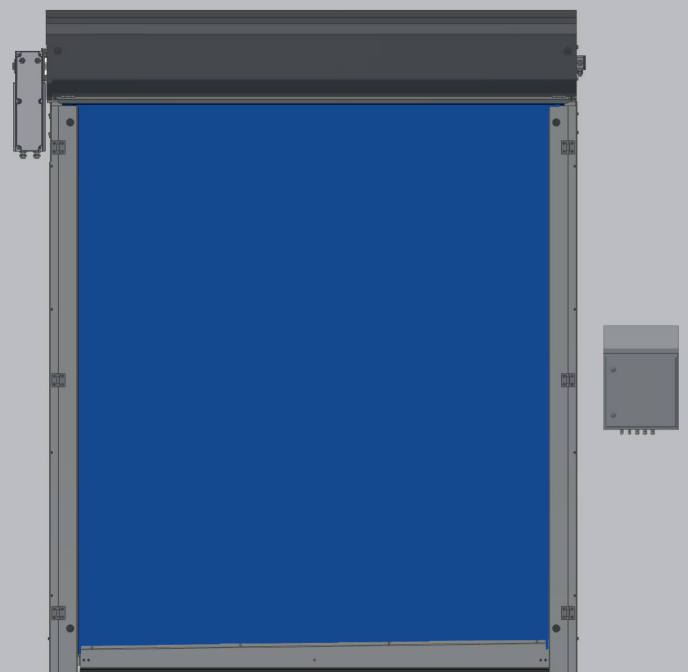
MINIRAPID FOOD is made of high quality stainless steel and is particularly resistant - even with frequent use of aggressive cleaning agents.

The beveled surfaces, such as those on the bale cover and on the control cabinet, allow dirty water to drain off quickly.

The ITW hygienic door has been successfully tested and certified by the DGUV, the testing and certification basis for food and packaging.



## SPECIAL FEATURES

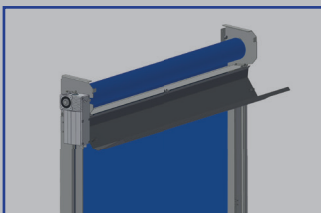


# FAST AND CLEAN

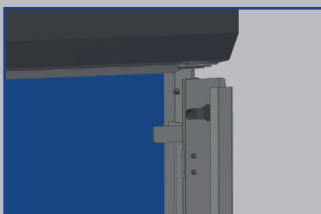
Fast opening and closing of the door systems are of great importance for a smooth logistics process in the hygiene area. This provides good protection for sensitive warehouses against harmful environmental influences such as drafts, dust, moisture and contamination.

In order to be able to clean the high-speed door thoroughly and without spending a lot of time, the components have been designed to be protected and yet easily accessible.

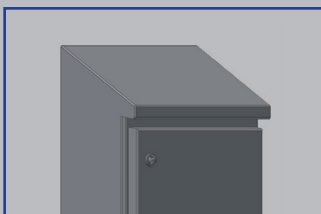
Also, fast door movements avoid additional loads on the energy-consuming cooling system. We developed the MINIRAPID FOOD high-speed door to simplify the daily cleaning work on the door.



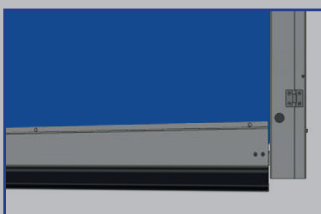
Hinged bale cover



Swing-open rail box



Sloped bottom rail



Beveled bottom rail

## TECHNICAL DATA

- Opening speed up to 2,0 m/s
- Closing speed up to 0,8 m/s
- Door sizes up to 4,0 m height and 4,0 m width
- Microprocessor control DR2100 in V2A switch cabinet IP66
- 230 V/50Hz, IP65 drive- Required lintel height min. 595 mm
- Curtain available in various colors or fully printed with a motif of your choice

## SAFETY

- Access protection by means of all-round cladding
- Passage monitoring by means of non-contact light barrier and self-monitoring closing edge
- Signal lights and traffic light control (optional)

# OUR FURTHER PRODUCT RANGE

MINIRAPID FOOD (EN) | 10.03.2023 | TECHNICAL CHANGES RESERVED



**SPIRAL DOORS**



**FOLDING DOORS**



**HORIZONTAL HIGH-SPEED DOORS**



**VERTIKAL HIGH-SPEED DOORS**



**SWING DOORS**



**STRIP CURTAINS**



**MACHINE PROTECTION DOORS**



**SECTIONAL DOORS**



**STEEL / ALUMINUM ROLLER DOORS**

## SCOPE OF APPLICATION



INDUSTRY



TRANSPORT



LOGISTICS



AUTOMOTIVE



M. PROTECTIONS



CLEAN ROOM



SUPERMARKET



FOOD



COOLING AREA



ATEX

**ITW Industrietore GmbH**  
Adolf-Kolping-Straße 14  
73072 Donzdorf  
Germany

Tel. +49 7162 9129-60  
Fax +49 7162 9129-64  
info@itw-torsysteme.de  
www.itw-torsysteme.de

